

**ANDAMAN PUBLIC WORKS
DEPARTMENT**

STANDARD OPERATING PROCEDURE FOR
DISASTER MANAGEMENT

CHIEF ENGINEER
APWD
PORT BLAIR

SUPERINTENDING ENGINEER
PORT BLAIR CENTRAL CIRCLE
APWD
PORT BLAIR

SUPERINTENDING ENGINEER
CONSTRUCTION CIRCLE No. I
APWD
PORT BLAIR

SUPERINTENDING ENGINEER
NICOBAR
APWD
CAR NICOBAR

EXECUTIVE ENGINEER
PBSD
APWD
PORT BLAIR

EXECUTIVE ENGINEER
CONSTRUCTION DIVISION No. I
APWD
PORT BLAIR

EXECUTIVE ENGINEER
RANGAT
APWD

EXECUTIVE ENGINEER
CAR NICOBAR
APWD

EXECUTIVE ENGINEER
PBND
APWD
PORT BLAIR

EXECUTIVE ENGINEER
CONSTRUCTION DIVISION No. II
APWD
PROTHRAPUR

EXECUTIVE ENGINEER
MAYABUNDER
APWD

EXECUTIVE ENGINEER
KAMORTA
APWD

EXECUTIVE ENGINEER
SAD
APWD
PORT BLAIR

EXECUTIVE ENGINEER
CONSTRUCTION DIVISION No. III
APWD
PROTHRAPUR

EXECUTIVE ENGINEER
DIGLIPUR
APWD

EXECUTIVE ENGINEER
CAMP BELL BAY
APWD

EXECUTIVE ENGINEER
WORKSHOP DIVISION
APWD
PORT BLAIR

EXECUTIVE ENGINEER
HUT BAY
APWD

EXECUTIVE ENGINEER
APWD, RCD
WIMBERLYGUNJ

EXECUTIVE ENGINEER
APWD, PHED
PORT BLAIR

EXECUTIVE ENGINEER
APWD, STORES DIVISION
PORT BLAIR

APWD SETUP IN VARIOUS ISLANDS

- DIGLIPUR
- MAYABUNDER
- RANGAT
- BARATANG
- WIMBERLYGUNJ
- PORT BLAIR
- HAVELOCK
- NEIL ISLAND
- LITTLE ANDAMAN
- CAR NICOBAR
- TERRESA
- KATCHAL
- KAMORTA
- CAMPBELL BAY
- CHOWRA
- LONG ISLAND
- STRAIT ISLAND(Havelock)

IDENTIFIED REVENUE SUBZONES FOR THE RELIEF / RESCUE

SOUTH ANDAMAN DISTRICT

FERRARGUNJ

PORT BLAIR

LITTLE ANDAMAN

FERRARGUNJ
BAMBOOFLAT

HAVELOCK
NEIL ISLAND
PORT BALIR
RUTLAND

HUT BAY
R.K.PUR

NORTH & MIDDLE ANDAMAN DISTRICT

DIGLIPUR

MAYABUNDER

RANGAT

DIGLIPUR
KALIGHAT

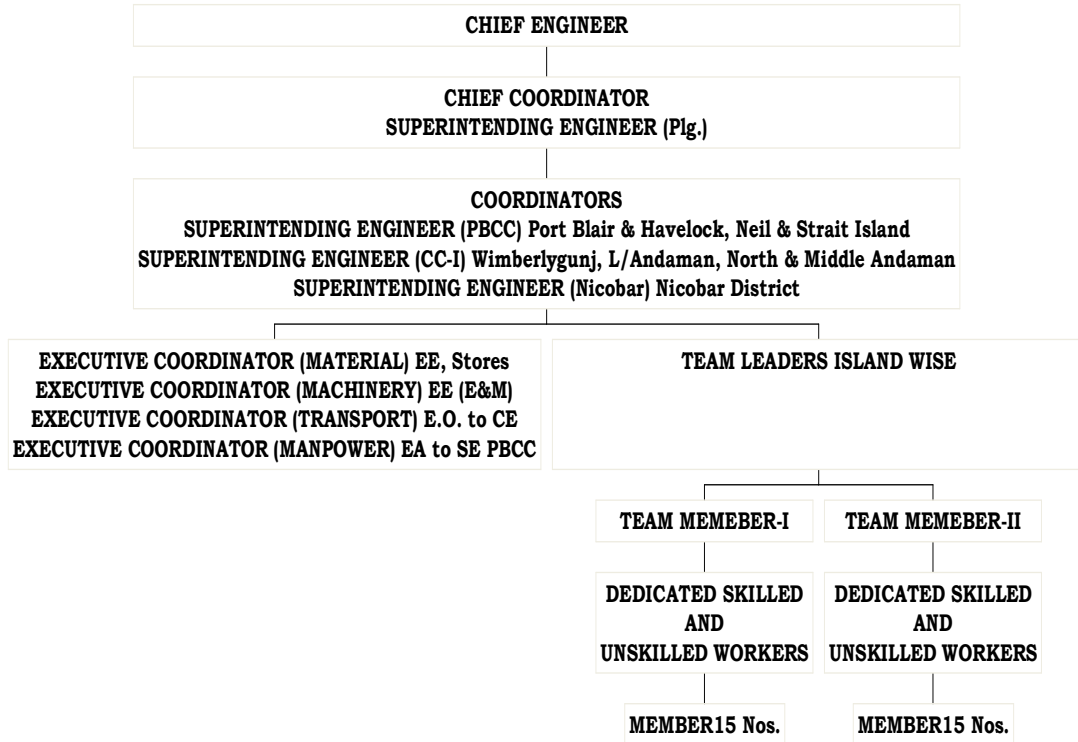
MAYABUNDER
BILLIGROUND

RANGAT
KADAMTALA
BARATANG
LONG ISLAND

NICOBAR DISTRICT

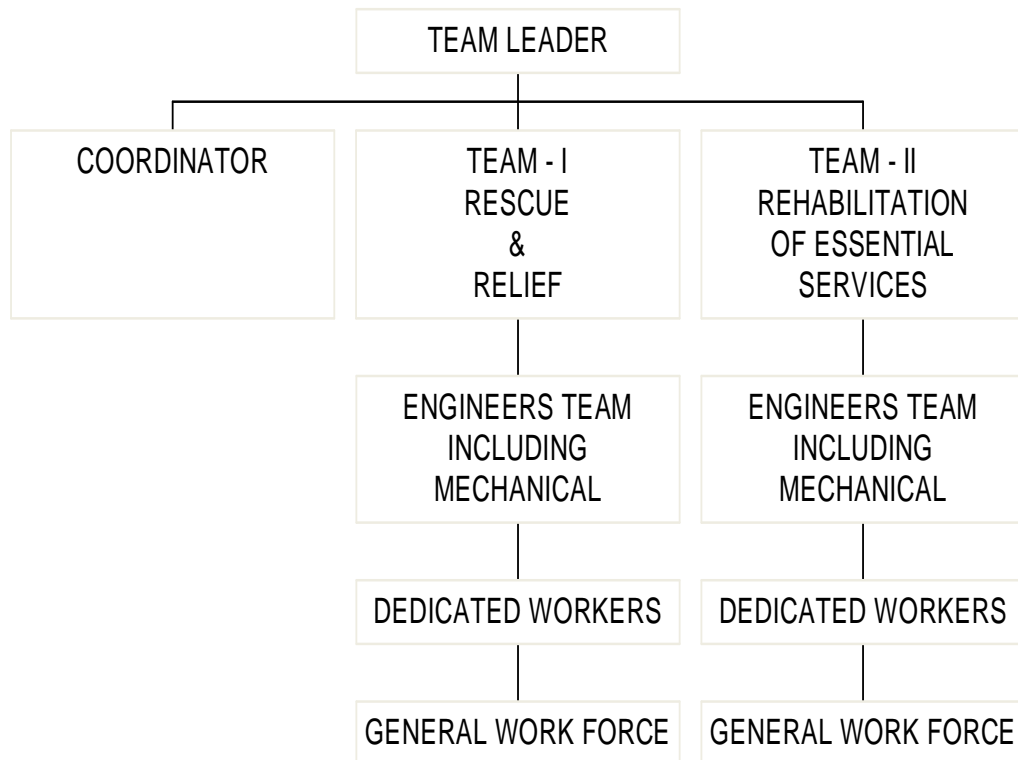
CARNICOBAR	CHOWRA	TERESSA	KATCHAL	NANCOWARY	PULOMILO	CAMPBELL BAY
CAR NICOBAR LAPATHY ARONG	CHOWRA	TERESSA - I TERESSA - II BAMPOKA	KATCHAL	NANCOWARY KAMORTA TRINKET	PULOMILO LITTLE NICOBAR KONDUL	CAMPBELL BAY LAXMI NAGAR

DISASTER MANAGEMENT SETUP



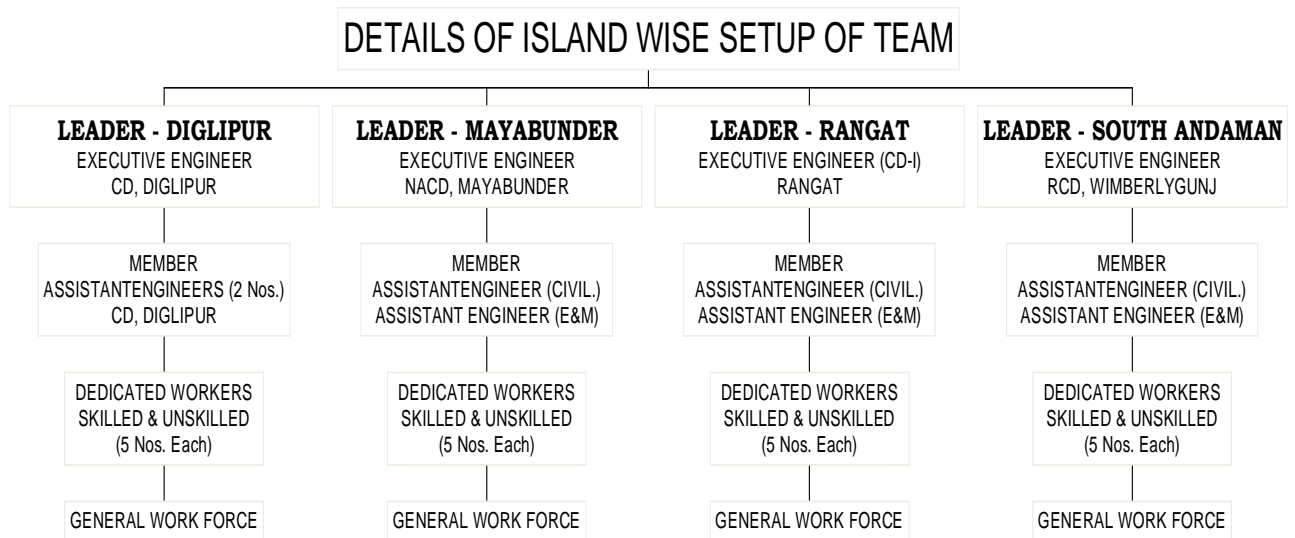
ISLAND WISE TEAM SETUP

ISLAND WISE TEAM SETUP

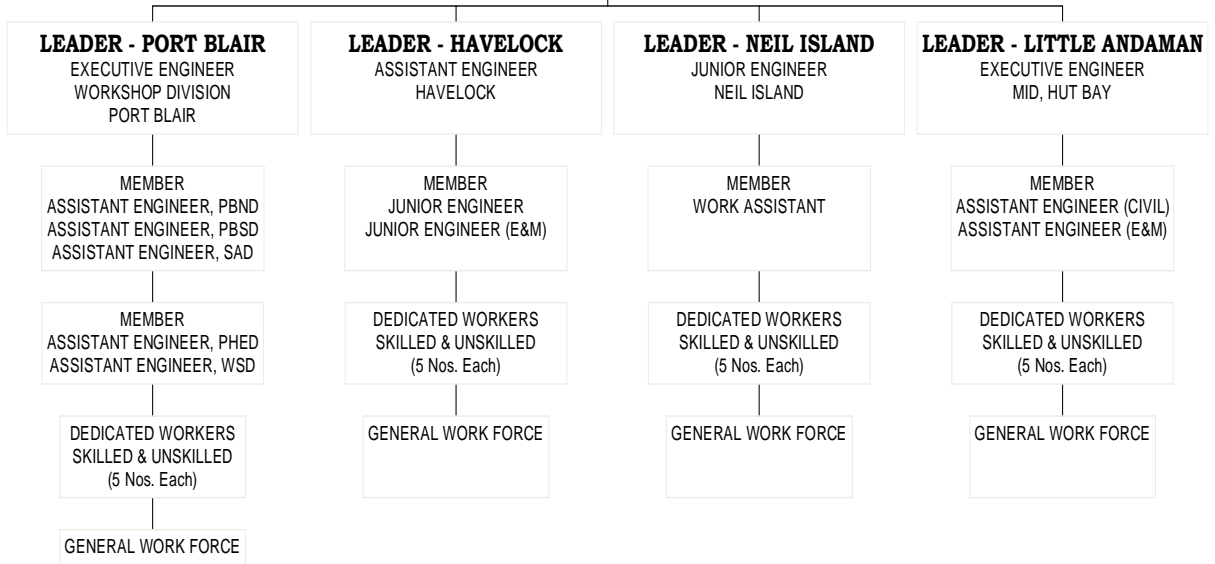


- **TEAM – I –** WILL WORK IN COORDINATION WITH RELIEF DEPARTMENT.
- **TEAM – II -** WILL WORK FOR REHABILITATION OF ESSENTIAL WORK OF APWD LIKE ROADS & WATER SUPPLY.

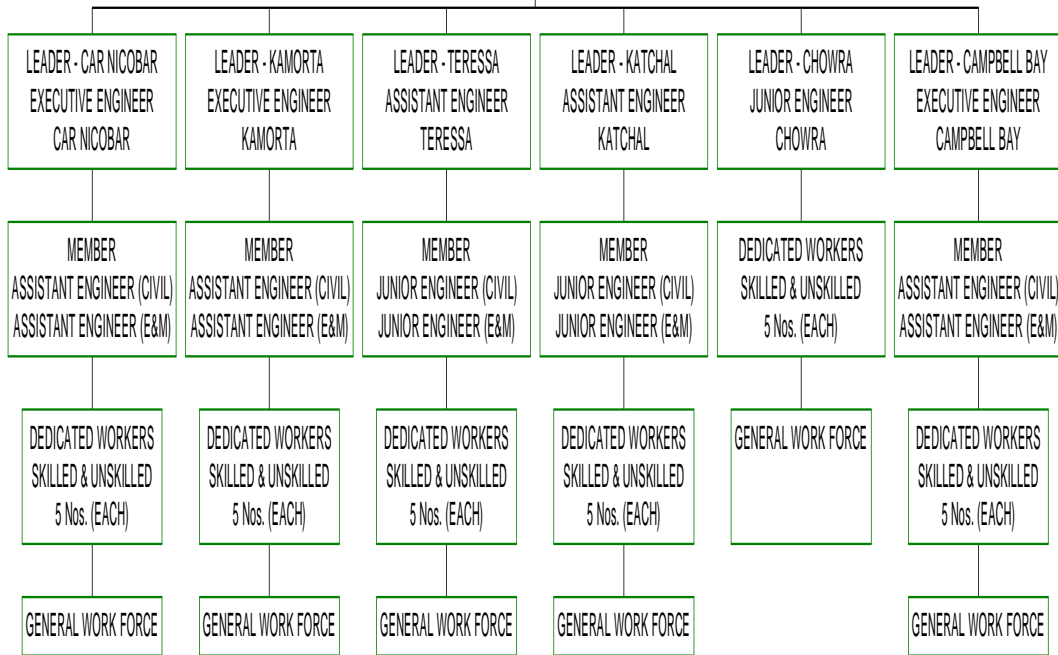
DETAILS OF ISLAND WISE SETUP OF TEAM



DETAILS OF ISLAND WISE SETUP OF TEAM



DETAILS OF ISLAND WISE SETUP OF TEAM



RESERVE TEAM

DIGLIPUR

MAYABUNDER

RANGAT

PORT BLAIR &
SOUTH ANDAMAN

EE (Plg)-I
CE's office

EE, PBND
PORT BLAIR

EE (Plg)-II
CE's office

EE (SAD)

AE (Plg)-I
AE(Plg)(E&M)-I

AE (Plg)-II
AE (Plg)-III
AE (Plg)(E&M)-II

AE (Plg)-IV
AE (Plg)(E&M)-III

AE (WSD)
AE (PHED)

RESERVE TEAM

LITTLE ANDAMAN

CAR NICOBAR

NANCOWARY

CAMPBELL BAY

EE (Plg)
CC-I

EE (Plg)
PBCC

EE
CD-II

EE
PBSD

AE (Plg)-I,
CC-I
AE (Plg)-II,
CC-I

AE (Plg)-I,
PBCC
AE (Plg)-II,
PBCC

AE-I,
CD-II
AE-II,
CD-I

AE-I,
PBSD
AE-III
PBSD

STAFF POSITION AT VARIOUS ISLANDS

Sl. No.	Place	EE	AE	JE	Worker
1.	Diglipur	1	6	21	329
2.	Mayabunder	1	4	17	169
3.	Rangat	2	4	17	224
4.	Baratang	-	1	3	74
5	South Andaman	1	5	22	389
6.	Port Blair	13	64	189	1426

Sl.No.	Place	EE	AE	JE	Workers
7.	Little Andaman	1	4	15	61
8.	Nicobar	2	11	36	201
9.	Teressa	-	2	5	20
10.	Chowra	-	-	1	05
11.	Katchal	-	2	5	20
12.	Kamorta	1	1	11	30
13.	Campbell Bay	1	4	14	199

ISLAND WISE MACHINERIES DETAILS

ISLAND WISE MACHINERIES DETAILS

BREAKING

CUTTING

LIFTING

CLEARING

WATER SUPPLY

TRANSPORT

DISCRIPTION OF MACHINERY	HUT BAY	CAR NICOBAR	TERESSA	KATCHAL	KAMORTA	CAMPBELL BAY
TRUCKS / TIPPERS	04	10	02	-	03	-
WATER TANKER	02	03	01	-	-	01
BULLDOZER	01	02	-	-	01	-
JCB'S	01	02	-	01	-	01
INSPECTION VEHICLE	03	05	01	01	01	-
ROAD ROLLER	03	02	01	02	02	02
TRACTOR WITH TRAILOR	02	02	01	01	02	02
MOTOR CYCLE	03	02	01	-	02	01

DESCRIPTION OF ITEMS	WORKSHOP PORT BLAIR	RCD W/G	CD H/LOCK	E&M RANGAT	NACD M/BUNDER	CD DIGLIPUR	MID HUT BAY	CD NICOBAR	CD C/BAY
ELECTRIC DRILL CUTTER	1	-	1	5	-	4	-	1	-
CHIPPING HAMMER	-	-	2	-	2	3	1	1	1
JACK WITH 5 TON LIFT	2	1	-	8	1	2	-	1	1
SLEDGE HAMMER	10	-	1	5	-	58	-	1	2
TWO HANDED CROSS CUT-SAW	-	2	-	-	-	1	-	-	-
SLOTTED SCREW DRIVERS				10					

RESPONSIBILITY AND DUTIES OF CHIEF COORDINATOR

The Chief Coordinator will be the overall in-charge of coordinator of all relief, rescue and rehabilitation work under the direct supervision of Chief Engineer.

All the team leaders, coordinators and executive coordinators will simultaneously report to the Chief Coordinator.

Any direction issued by the Chief Coordinator will strictly be implemented at site.

The Coordinators of all the Islands must sent the daily report to the Chief Coordinator and to pass on the direction issued by the Chief Coordinator to the team leader and other members as the case may be.

The Chief Coordinator will inform the daily progress to the Chief Engineer and prepare the strategy for the next day.

Every day a meeting will be held under the chairmanship of Chief Engineer with connected officials for next day's strategy.

STRATEGY OF MANAGEMENT

Immediately after the disaster struck the Island team will activate and start rescue and relief immediately without waiting for any direction.

Island Coordinator will immediately inform through available means to Chief Coordinator / Superintending Engineer concerned.

Immediately requirement of men and material will be placed to Chief Coordinator.

Chief coordinator in turn will place the requirement of Material to Executive Coordinator (Material) and Machinery to Executive coordinator (Machinery).

The Executive coordinator concerned will dispatch the same through available means and inform the coordinator island and Chief Coordinator.

Rescue and Relief will commence immediately after the disaster by the local team.

In case of non availability of team at local island a team will move from the nearest island.

In case of Major disaster a special dedicated team of Engineers and workers for individual island formatted will move in short notice.

Additional Engineers and work force will be sent from head quarter to manage the damage assessment, road clearance and restoration of water supply as per the case.

The daily progress report of rescue relief rehabilitation will be send by the coordinator to the Chief coordinator.

The development of each day will be monitored by the Chief Engineer and inform the Administration.

Any additional requirement of men, material and machinery will be brought to the knowledge of Administration by the Chief Engineer.

The Transport arrangement for movement of staff will be made by the Executive Coordinator (Transport).

The Additional manpower required for any area will be made available by the Executive Coordinator (Manpower)

MACHINERY REQUIREMENT AT VARIOUS ISLANDS

RESERVE SMALL T&P AT MAIN CENTRAL STORE

HAMMER OF VARIOUS SIZES – 200 Nos.

PICK AXE - 200 Nos.

SPADE - 200 Nos.

BELCHA - 200 Nos.

DAH WITH HANDLE - 200 Nos.

DOUBLE HANDLE SAW - 50 Nos.

PLASTIC ROPE - 1000 Mtrs.

CUTTING AXE (KULHADI) - 200 Nos.

CROW BAR - 200 Nos.

JACK WITH 100 T LIFT - 20 Nos.

TARPAULINE (BIG SIZE) - 100 Nos.

RESERVE SMALL T&P AT EACH ISLANDS

HAMMER OF VARIOUS SIZES – 50 Nos.

PICK AXE - 50 Nos.

SPADE - 50 Nos.

BELCHA - 50 Nos.

DAH WITH HANDLE - 50 Nos.

DOUBLE HANDLE SAW - 20 Nos.

PLASTIC ROPE - 300 Mtrs.

CUTTING AXE (KULHADI) - 50 Nos.

CROW BAR - 50 Nos.

JACK WITH 100 T LIFT - 02 Nos.

TARPAULINE (BIG SIZE) - 15 Nos.

OFFICE LOCATION OF VARIOUS OFFICIALS & CONTACT NUMBERS

Sl. No.	Name & designation	Office address	Phone Office	Phone Resident
1.	Shri. P.K.Singh Chief Engineer	APWD Complex, Port Blair	232852 FX – 230215	233381 9434262857
2.	Shri. M.K.Verma, SE, PBCC	APWD Complex, Port Blair	232206	231508 9434276690
3.	S Shri. Balbir Singh SE, CC-I	APWD Complex, Port Blair	232556	227033 9434288639
4.	Shri. Newazesh Ali, SE, Planning	APWD Complex, Port Blair	232349	9434280553
5.	Shri. D.Balaji, SE, Nicobar	SE office HQ area Car Nicobar	365271	265271 9474245151

6.	Chief Coordinator Shri. Newazesh Ali, SE, Planning	APWD Complex, Port Blair	232349	233604 9434280553
7.	Ex. Coordinator (Material) Shri. Alex Varghese , EE, Store Division	Store Division, APWD Port Blair	232322	9434280816
8.	Ex. Coordinator (Machineries) Shri. Manoharan EE, E&M, Port Blair	APWD Workshop Complex Mohanpura, Port Blair	238132	9434282348
9.	Ex. Coordinator (Transport) Shri.Jatin Majhi, AE (Works) Planning.	APWD Complex, Port Blair.	231752	9434267083
10.	Team Leader – Diglipur Shri. Satish Chander Nath, EE, Diglipur	EE's office, , CD, APWD, Diglipur	272203 272204	9679593341

11.	Team Leader –Mayabunder Shri. K.Murthy, EE, NACD, M/B	EE's office, APWD, NACD, M/Bunder	273214 262909	9476072303
12.	Team Leader – Rangat Shri. Sumit Choudary , EE, Rangat.	EE's office, APWD, Rangat	274237	9434272083
13.	Team Leader –Baratang Shri. P.L.Masilamani, AE, CD, Baratang	AE's office, APWD, Baratang	279515	267003 9476025161
14.	Team Leader – South Andaman Shri. T.K Chandereksher, EE, RCD.	EE's Office, APWD, Wimberly Gunj	255800 255238	229151 9434275515
15.	Team Leader – Port Blair Shri.Mayyanathan, EE, WSD	EE's Office Workshop Division, Supply Line, Port Blair	232403	9434262105

16.	Team Leader – Little Andaman Shri. Thomas Herenj, add. charge EE, MID	EE's office, APWD, MID, Hut Bay, Little Andaman	284545	9474261306
17.	Team Leader – Car Nicobar, Shri. Jina Prakash. EE, CD, CN	EE's office, HQ area, APWD, Car Nicobar	265222 265956	9434272042
18.	Team Leader – Teressa Shri. Albertus, AE, Teressa	AE's office, APWD, Teressa	268268	9434213386
19.	Team Leader – Katchal Shri. Sudipta Saha AE, Katchal	AE's office, APWD, Katchal	262385	262385 9434261021

20.	Team Leader - Kamorta Shri. Yashvi Parekh, EE, Kamorta	EE's office Kamorta	263347	263389 9434281042
21.	Team Leader – Campbell Bay Shri. C. M Chozhi, EE,Campbell Bay	EE's office Campbell Bay	264218	9434272042
22.	Team Leader - Havelock Shri. B.C. Rao, AE, Havelock	AE's Office, Havelock	282105	9434281956
24.	Team Leader - Neil Shri. N.G. Sanjay, JE, Neil Islands	JE's Office, Neil Islands		9434266512

THANKS