

ANDAMAN PUBLIC WORKS DEPARTMENT

STANDARD OPERATING PROCEDURE FOR
DISASTER MANAGEMENT

CHIEF ENGINEER
APWD
PORT BLAIR

SUPERINTENDING ENGINEER
PORT BLAIR CENTRAL CIRCLE
APWD
PORT BLAIR

SUPERINTENDING ENGINEER
CONSTRUCTION CIRCLE No. I
APWD
PORT BLAIR

SUPERINTENDING ENGINEER
NICOBAR
APWD
CAR NICOBAR

EXECUTIVE ENGINEER
PBSD
APWD
PORT BLAIR

EXECUTIVE ENGINEER
CONSTRUCTION DIVISION No. I
APWD
PORT BLAIR

EXECUTIVE ENGINEER
RANGAT
APWD

EXECUTIVE ENGINEER
CAR NICOBAR
APWD

EXECUTIVE ENGINEER
PBND
APWD
PORT BLAIR

EXECUTIVE ENGINEER
CONSTRUCTION DIVISION No. II
APWD
PROTHRAPUR

EXECUTIVE ENGINEER
MAYABUNDER
APWD

EXECUTIVE ENGINEER
KAMORTA
APWD

EXECUTIVE ENGINEER
SAD
APWD
PORT BLAIR

EXECUTIVE ENGINEER
CONSTRUCTION DIVISION No. III
APWD
PROTHRAPUR

EXECUTIVE ENGINEER
DIGLIPUR
APWD

EXECUTIVE ENGINEER
CAMP BELL BAY
APWD

EXECUTIVE ENGINEER
WORKSHOP DIVISION
APWD
PORT BLAIR

EXECUTIVE ENGINEER
HUT BAY
APWD

EXECUTIVE ENGINEER
APWD, RCD
WIMBERLYGUNJ

EXECUTIVE ENGINEER
APWD, P HED
PORT BLAIR

EXECUTIVE ENGINEER
APWD, STORES DIVISION
PORT BLAIR

APWD SETUP IN VARIOUS ISLANDS

- DIGLIPUR
- MAYABUNDER
- RANGAT
- BARATANG
- WIMBERLYGUNJ
- PORT BLAIR
- HAVELOCK
- NEIL ISLAND
- LITTLE ANDAMAN
- CAR NICOBAR
- TERRESA
- KATCHAL
- KAMORTA
- CAMPBELL BAY
- CHOWRA
- LONG ISLAND
- STRAIT ISLAND(Havelock)

IDENTIFIED REVENUE SUBZONES FOR THE RELIEF / RESCUE

SOUTH ANDAMAN DISTRICT

FERRARGUNJ

PORT BLAIR

LITTLE ANDAMAN

FERRARGUNJ
BAMBOOFLAT

HAVELOCK
NEIL ISLAND
PORT BALIR
RUTLAND

HUT BAY
R.K.PUR

NORTH & MIDDLE ANDAMAN DISTRICT

DIGLIPUR

MAYABUNDER

RANGAT

DIGLIPUR
KALIGHAT

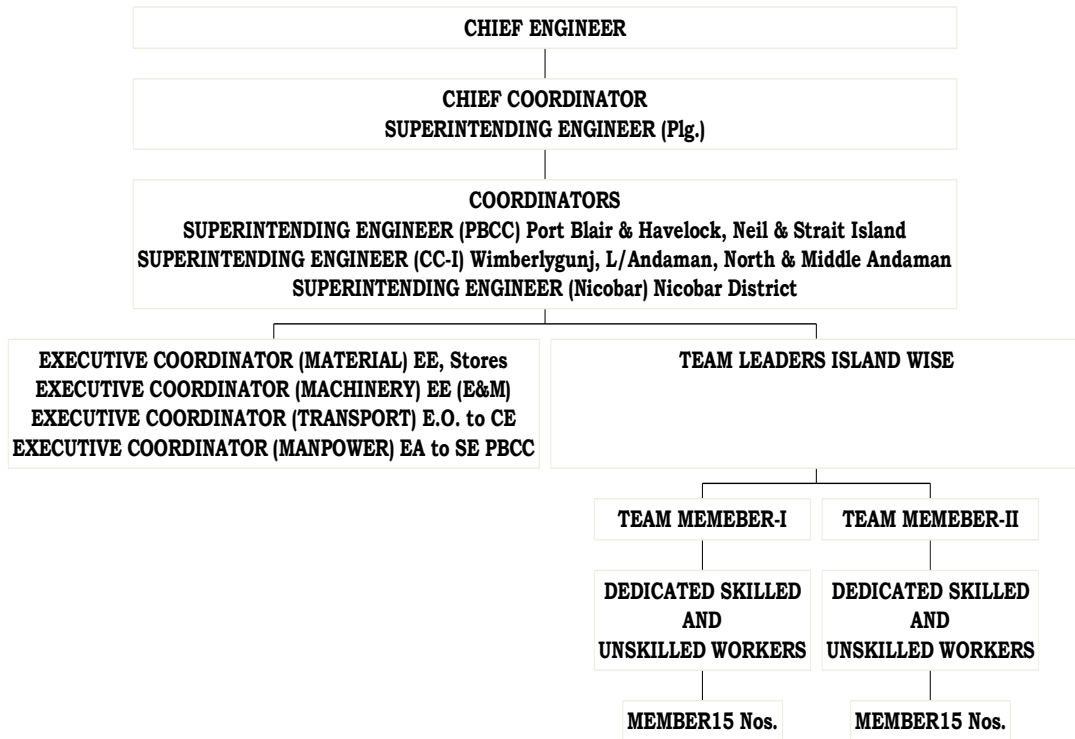
MAYABUNDER
BILLIGROUND

RANGAT
KADAMTALA
BARATANG
LONG ISLAND

NICOBAR DISTRICT

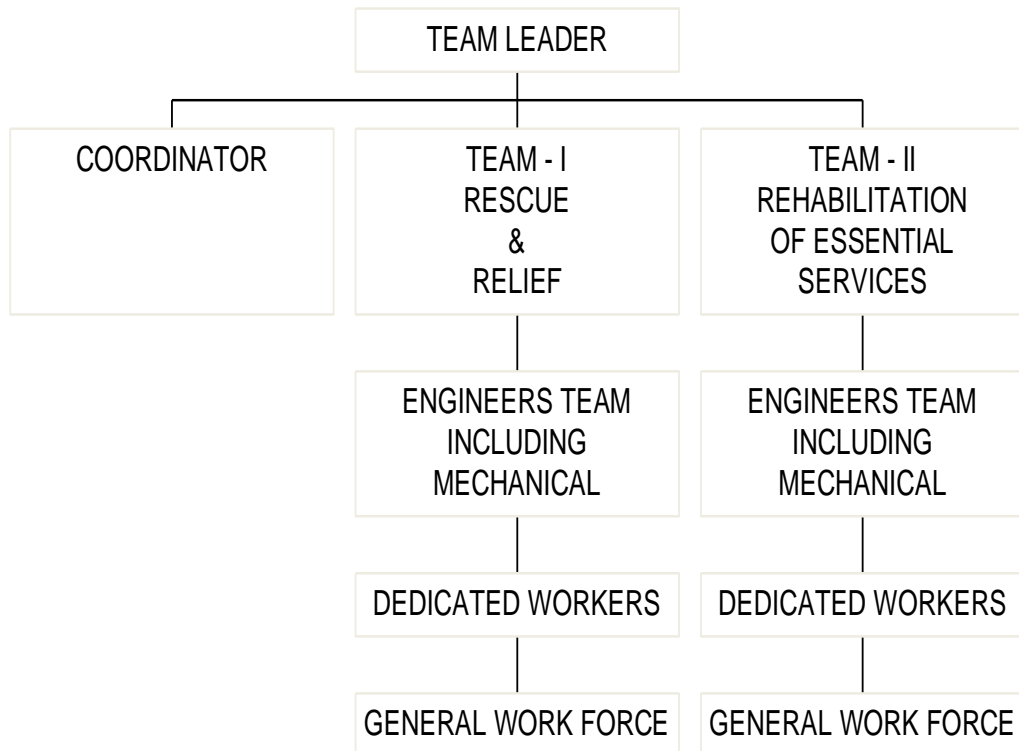
CARNICOBAR	CHOWRA	TERESSA	KATCHAL	NANCOWARY	PULOMILO	CAMPBELL BAY
CAR NICOBAR LAPATHY ARONG	CHOWRA	TERESSA - I TERESSA - II BAMPOKA	KATCHAL	NANCOWARY KAMORTA TRINKET	PULOMILO LITTLE NICOBAR KONDUL	CAMPBELL BAY LAXMI NAGAR

DISASTER MANAGEMENT SETUP



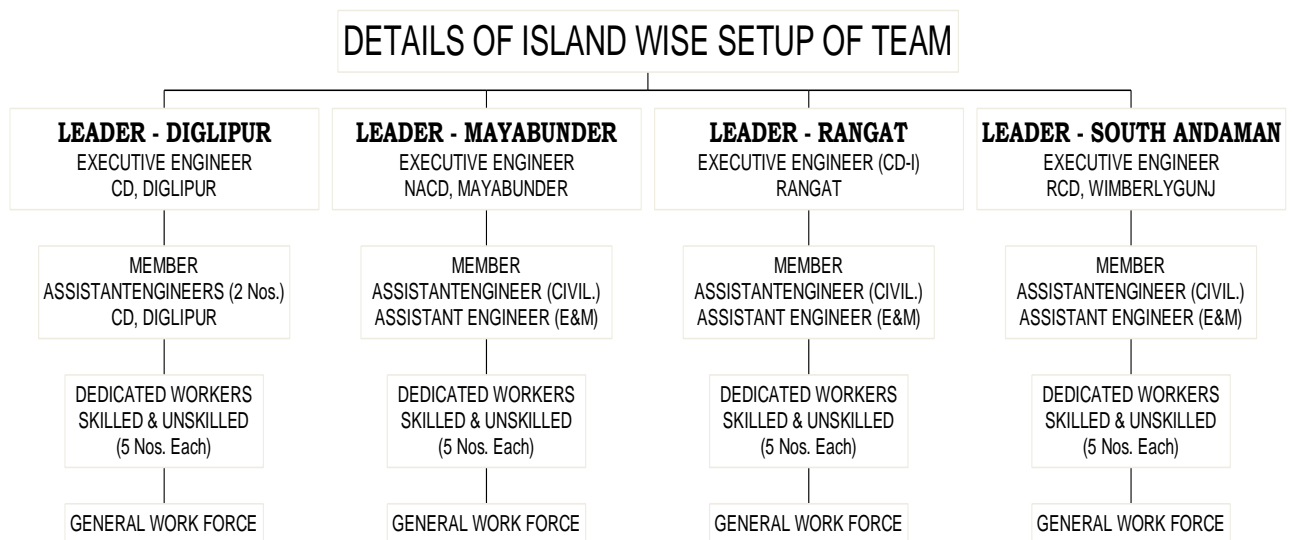
ISLAND WISE TEAM SETUP

ISLAND WISE TEAM SETUP

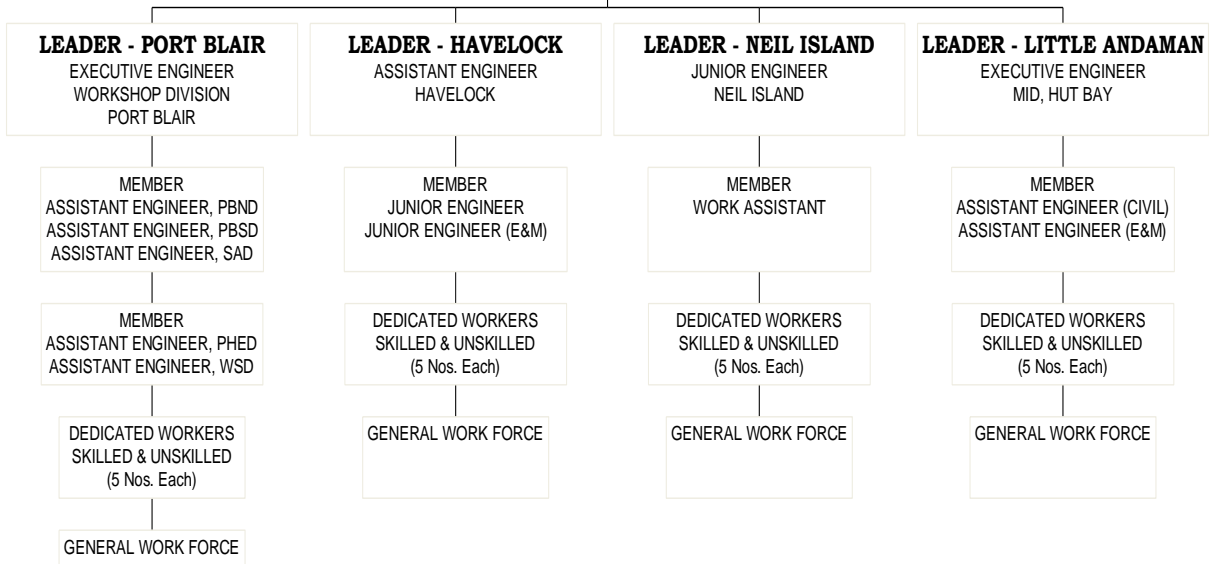


- **TEAM – I –** WILL WORK IN COORDINATION WITH RELIEF DEPARTMENT.
- **TEAM – II -** WILL WORK FOR REHABILITATION OF ESSENTIAL WORK OF APWD LIKE ROADS & WATER SUPPLY.

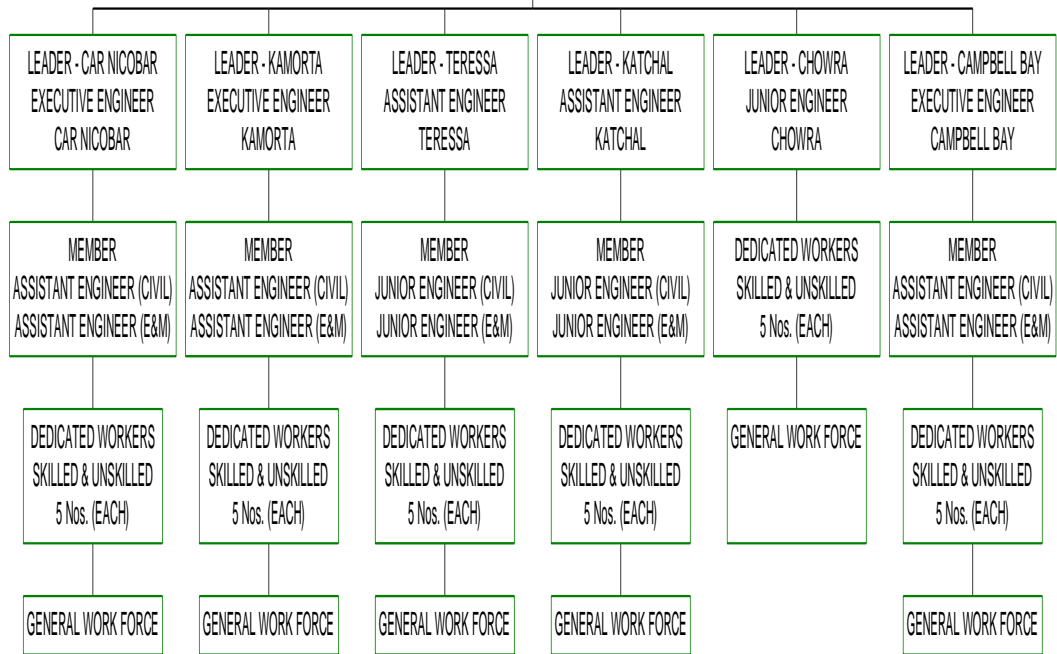
DETAILS OF ISLAND WISE SETUP OF TEAM



DETAILS OF ISLAND WISE SETUP OF TEAM



DETAILS OF ISLAND WISE SETUP OF TEAM



RESERVE TEAM

DIGLIPUR

MAYABUNDER

RANGAT

PORT BLAIR &
SOUTH ANDAMAN

EE (Plg)-I
CE's office

EE, PBND
PORT BLAIR

EE (Plg)-II
CE's office

EE (SAD)

AE (Plg)-I
AE(Plg)(E&M)-I

AE (Plg)-II
AE (Plg)-III
AE (Plg)(E&M)-II

AE (Plg)-IV
AE (Plg)(E&M)-III

AE (WSD)
AE (PHED)

RESERVE TEAM

LITTLE ANDAMAN

CAR NICOBAR

NANCOWARY

CAMPBELL BAY

EE (Plg)
CC-I

EE (Plg)
PBCC

EE
CD-II

EE
PBSD

AE (Plg)-I,
CC-I
AE (Plg)-II,
CC-I

AE (Plg)-I,
PBCC
AE (Plg)-II,
PBCC

AE-I,
CD-II
AE-II,
CD-I

AE-I,
PBSD
AE-III
PBSD

STAFF POSITION AT VARIOUS ISLANDS

Sl. No.	Place	EE	AE	JE	Worker
1.	Diglipur	1	6	21	329
2.	Mayabunder	1	4	17	169
3.	Rangat	2	4	17	224
4.	Baratang	-	1	3	74
5.	South Andaman	1	5	22	389
6.	Port Blair	13	64	189	1426

Sl.No.	Place	EE	AE	JE	Workers
7.	Little Andaman	1	4	15	61
8.	Nicobar	2	11	36	201
9.	Teressa	-	2	5	20
10.	Chowra	-	-	1	05
11.	Katchal	-	2	5	20
12.	Kamorta	1	1	11	30
13.	Campbell Bay	1	4	14	199

ISLAND WISE MACHINERIES DETAILS

ISLAND WISE MACHINERIES DETAILS

BREAKING

CUTTING

LIFTING

CLEARING

WATER SUPPLY

TRANSPORT

DISCRIPTION OF MACHINERY	HUT BAY	CAR NICOBAR	TERESSA	KATCHAL	KAMORTA	CAMPBELL BAY
TRUCKS / TIPPERS	04	10	02	-	03	-
WATER TANKER	02	03	01	-	-	01
BULLDOZER	01	02	-	-	01	-
JCB'S	01	02	-	01	-	01
INSPECTION VEHICLE	03	05	01	01	01	-
ROAD ROLLER	03	02	01	02	02	02
TRACTOR WITH TRAILOR	02	02	01	01	02	02
MOTOR CYCLE	03	02	01	-	02	01

DESCRIPTION OF ITEMS	WORKSHOP PORT BLAIR	RCD W/G	CD H/LOCK	E&M RANGAT	NACD M/BUNDER	CD DIGLIPUR	MID HUT BAY	CD NICOBAR	CD C/BAY
ELECTRIC DRILL CUTTER	1	-	1	5	-	4	-	1	-
CHIPPING HAMMER	-	-	2	-	2	3	1	1	1
JACK WITH 5 TON LIFT	2	1	-	8	1	2	-	1	1
SLEDGE HAMMER	10	-	1	5	-	58	-	1	2
TWO HANDED CROSS CUT-SAW	-	2	-	-	-	1	-	-	-
SLOTTED SCREW DRIVERS				10					

RESPONSIBILITY AND DUTIES OF CHIEF COORDINATOR

The Chief Coordinator will be the overall in-charge of coordinator of all relief, rescue and rehabilitation work under the direct supervision of Chief Engineer.

All the team leaders, coordinators and executive coordinators will simultaneously report to the Chief Coordinator.

Any direction issued by the Chief Coordinator will strictly be implemented at site.

The Coordinators of all the Islands must send the daily report to the Chief Coordinator and to pass on the direction issued by the Chief Coordinator to the team leader and other members as the case may be.

The Chief Coordinator will inform the daily progress to the Chief Engineer and prepare the strategy for the next day.

Every day a meeting will be held under the chairmanship of Chief Engineer with connected officials for next day's strategy.

STRATEGY OF MANAGEMENT

Immediately after the disaster struck the Island team will activate and start rescue and relief immediately without waiting for any direction.

Island Coordinator will immediately inform through available means to Chief Coordinator / Superintending Engineer concerned.

Immediately requirement of men and material will be placed to Chief Coordinator.

Chief coordinator in turn will place the requirement of Material to Executive Coordinator (Material) and Machinery to Executive coordinator (Machinery).

The Executive coordinator concerned will dispatch the same through available means and inform the coordinator island and Chief Coordinator.

Rescue and Relief will commence immediately after the disaster by the local team.

In case of non availability of team at local island a team will move from the nearest island.

In case of Major disaster a special dedicated team of Engineers and workers for individual island formatted will move in short notice.

Additional Engineers and work force will be sent from head quarter to manage the damage assessment, road clearance and restoration of water supply as per the case.

The daily progress report of rescue relief rehabilitation will be send by the coordinator to the Chief coordinator.

The development of each day will be monitored by the Chief Engineer and inform the Administration.

Any additional requirement of men, material and machinery will be brought to the knowledge of Administration by the Chief Engineer.

The Transport arrangement for movement of staff will be made by the Executive Coordinator (Transport).

The Additional manpower required for any area will be made available by the Executive Coordinator (Manpower)

MACHINERY REQUIREMENT AT VARIOUS ISLANDS

RESERVE SMALL T&P AT MAIN CENTRAL STORE

HAMMER OF VARIOUS SIZES	– 200 Nos.
PICK AXE	- 200 Nos.
SPADE	- 200 Nos.
BELCHA	- 200 Nos.
DAH WITH HANDLE	- 200 Nos.
DOUBLE HANDLE SAW	- 50 Nos.
PLASTIC ROPE	- 1000 Mtrs.
CUTTING AXE (KULHADI)	- 200 Nos.
CROW BAR	- 200 Nos.
JACK WITH 100 T LIFT	- 20 Nos.
TARPAULINE (BIG SIZE)	- 100 Nos.

RESERVE SMALL T&P AT EACH ISLANDS

HAMMER OF VARIOUS SIZES	– 50 Nos.
PICK AXE	- 50 Nos.
SPADE	- 50 Nos.
BELCHA	- 50 Nos.
DAH WITH HANDLE	- 50 Nos.
DOUBLE HANDLE SAW	- 20 Nos.
PLASTIC ROPE	- 300 Mtrs.
CUTTING AXE (KULHADI)	- 50 Nos.
CROW BAR	- 50 Nos.
JACK WITH 100 T LIFT	- 02 Nos.
TARPAULINE (BIG SIZE)	- 15 Nos.

OFFICE LOCATION OF VARIOUS OFFICIALS & CONTACT NUMBERS

Sl. No.	Name & Degination	Office address	Phone Office	Phone Resident
1.	Brig.Amit Kathpalia Chief Engineer	APWD Complex, Port Blair	232852 FX – 230215	9531905290
2.	Shri. A. .Subramaiam SE, PBCC	APWD Complex, Port Blair	232206	9933219403
3.	Shri. M. S. Subramanian, SE, CC-I	APWD Complex, Port Blair	232556	9434287567
4.	Shri. D.Balaji SE, Planning	APWD Complex, Port Blair	232349	9474245151
5.	Shri. Thej Bahadur, SE, Nicobar	SE office HQ area Car Nicobar	265222	9434274413
6.	Chief Coordinator Shri. D. Balaji, SE, Planning	APWD Complex, Port Blair	232349	9474245151
7.	Ex. Coordinator (Material) Shri. T.K. Chandrashekher, EE, Store Division	Store Division, APWD Port Blair	232322	9474229598

8.	Ex. Coordinator (Machineries) Shri. Murlidharan (I/c) EE, E&M, Prothrapur	APWD Workshop Complex Mohanpura, Port Blair	258018	9434281535
9.	Ex. Coordinator (Transport) Shri. Maheshwar Rao, (E.O to CE).	APWD Complex, Port Blair.	231752	9434274118
10.	Team Leader – Diglipur Shri. Shyam Nath, EE, Diglipur	EE’s office, Subashgram, CD, Diglipur	272203 272204	9434287629
11.	Team Leader –Mayabunder Shri. .Dwipender Das (I/c) EE, NACD, M/B	EE’s office, APWD, NACD, M/Bunder	262909	9476050198
12.	Team Leader – Rangat Shri. Pushparaju, EE, Rangat.	EE’s office, APWD, Rangat	274237	9474291777
13.	Team Leader –Baratang Shri. Ali Mumtaj, AE, CD, Baratang	AE’s office, APWD, Baratang	279515	9434281508

14.	Team Leader – South Andaman Shri. M. Chozhi, EE, RCD, Wimberlygunj	EE's Office, APWD, Wimberly Gunj	255238	9531932901
15.	Team Leader – Port Blair Shri.Manoharan, EE, WSD, Port Blair	EE's Office Workshop Division, Supply Line, Port Blair	232403	9434282348
16.	Team Leader – Little Andaman Shri. Biju Verghese, EE, MID, Hut Bay	EE's office, APWD, MID, Hut Bay, Little Andaman	284545	9434283860
17.	Team Leader – Car Nicobar, Shri. Satish ch. Nath. EE, CD, Car Nicobar	EE's office, HQ area, APWD, Car Nicobar	265956	9679593341
18.	Team Leader – Teresa Shri. Albertus, AE, Teresa	AE's office, APWD, Teresa	268268	9434213386

19.	Team Leader – Katchal Shri. Sudipta Saha AE, Katchal	AE's office, APWD, Katchal	262385	9434261021
20.	Team Leader - Kamorta Shri. Ismail Sardar, EE, Kamorta	EE's office Kamorta	263347	9434280437
21.	Team Leader – Campbell Bay Shri. Lingaraju, EE, Campbell Bay	EE's office Campbell Bay	264218	9434280493
22.	Team Leader - Havelock Shri. Mohd. Ali, AE, Havelock	AE's Office, Havelock	282105	9434266084
24.	Team Leader - Neil Shri. Bishir, JE Neil Islands	JE's Office, Neil Islands		

THANKS